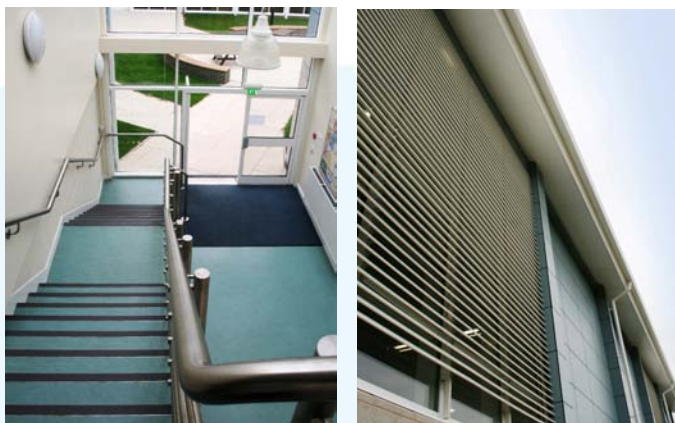


“Evers: building since 1918.”



EVERS
building contractors

Southend High School for Girls



The project comprised of the construction of a 2 storey art and technology block, a multi-purpose sports hall, changing areas and reception. The new facilities were designed to create a landscaped courtyard. The contract included for some alterations and refurbishment to the existing school with links to the new buildings. Work was completed within the contract period & without disruption to the school's busy academic programme. Work was carried out in very close proximity to the examination hall and the contract therefore imposed rigorous noise restrictions.

Construction details included mass concrete foundations, precast concrete floors & staircases, steel frame construction, feature beams and a curved structural roof decking. External walls comprised of a mixture of fairfaced architectural masonry, structural metal framing with Trespa rain screen cladding and aluminium curtain walling and windows. Roof glazing created an airy atria and north lighting to art rooms.

Internal finishes included fairfaced masonry, suspended ceilings, and a variety of floor finishes including a specialist sports hall flooring system.

Sustainability being an important feature the project achieved a Breeam very good rating and included a ground source heat pump and efficient ventilation systems. Other energy saving aspects provided were facades that were detailed with solar shading and some entirely maintenance free products.

Client

Southend Borough Council

Architect

Living Architects

Structural Engineers

Curtins

Contract Details

Value: £3M Period: 52 weeks

Constructed

2008

T.J. Evers Ltd.

New Road, Tiptree, Colchester, Essex, CO5 0HQ

tel: 01621 815787

fax: 01621 818085

email: office@tjevers.co.uk

web: www.tjevers.co.uk