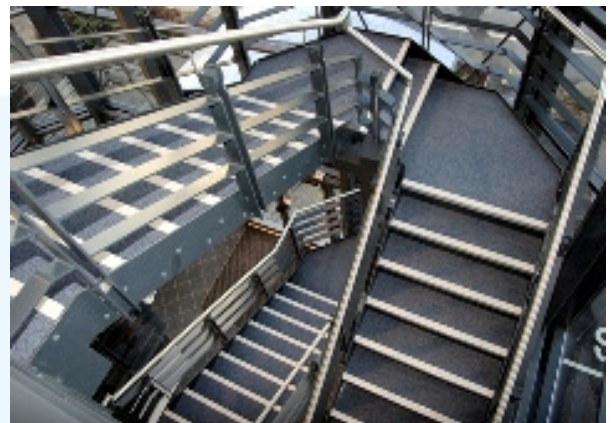


Harlow Incubation Centre



A finalist in the LABC awards Harlow Incubation Centre comprised of almost 2000m² of office space with car-parking, reception, circulation and rest areas spread over 3 floors.

The building purchased by Harlow council was typical of its 1970's era, RC frame, masonry panels, steel windows and had since been used by a number of tenants, all leaving their own mark.

Stripped back to the bare structure alterations were made, particularly in the formation of the new fully glazed entrance lobby. The outside of the building was insulated and clad with a combination of rain screen and render around aluminium windows, the roof was insulated and finished in a single ply roof membrane. Internally each floor was reconfigured to form a variety of fully serviced office units ranging from 40-120m². The electrical and mechanical installations were completely renewed allowing individual control of the power, lighting, heating and ventilation of the units.

Upon completion, the building retained only its original silhouette, brought up to current standards and expectations, a building that had stood empty for a number of years had been given a new lease of life.

Client:

Harlow Council
East of England development
authority (EEDA)

Architect:

Baquus Boxall Sayer

Contract Details:

Value: £3.0M

JCT IFC Spec and drawings

Completed:

2008